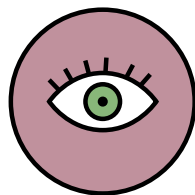


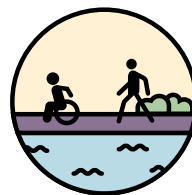
## Executive summary

London's communities and centres have shown great resilience in the way in which they have responded in swift, agile and innovative ways to the greatest public health crisis of our times and its impacts on the city. The priorities set out below, which we examine in detail in each section of this report, have been identified as aspects of planning, design and development that need to be nurtured and improved so that London's high streets and town centres can absorb future shocks and continue to prosper into the future.



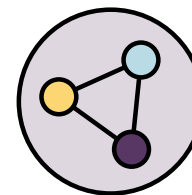
### VISIONARY

Understanding the unique qualities and purpose of a place – and creating a vision for it



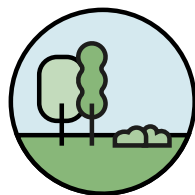
### PUBLIC

Recognising the power of well-designed and inclusive public realm



### CONNECTED

Appreciating that local neighbourhoods work in harness with agglomeration



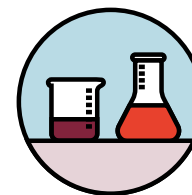
### CLIMATE RESILIENT

Ensuring sustainability is central to new placemaking strategies



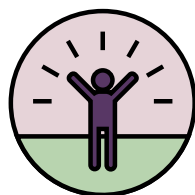
### COLLABORATIVE

Working in partnership



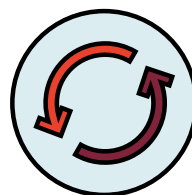
### EXPERIMENTAL

Encouraging experimentation



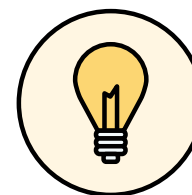
### SOCIALLY RESPONSIVE

Reinforcing social value, caring for people's needs and wellbeing



### MIXED-USE

Supporting a more diverse and adaptable mix of uses and services



### SMART

Capturing the value of data and using it in the right way