



**20,000**  
new homes

**25,000**  
new jobs post  
construction

**6.5m** sq ft  
commercial  
space

**£15bn +**  
total investment  
value

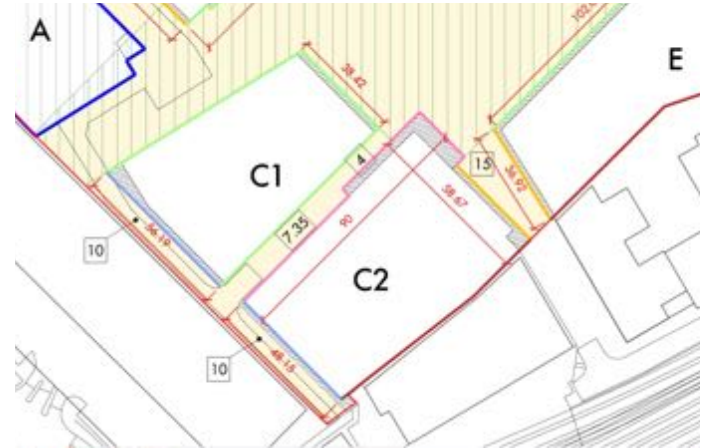
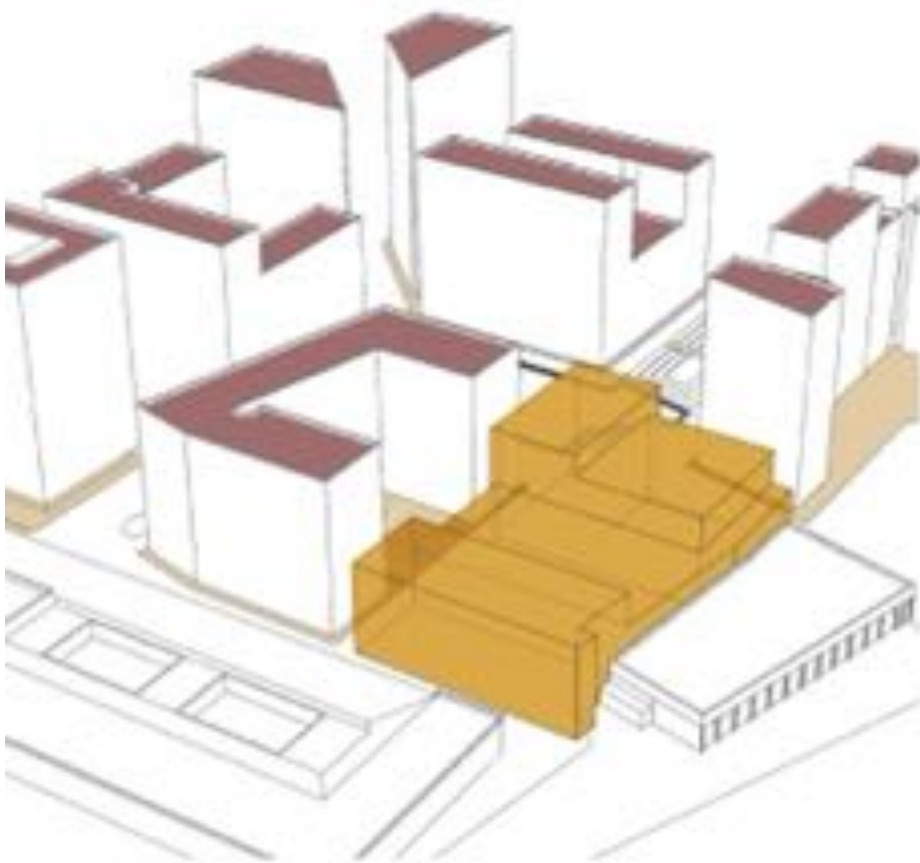
Two new  
Tube stations,  
new schools,  
health centres,  
community and  
leisure facilities



SINCE 2000



CONTEMPORARY  
FLOWER MARKET





- 2 FE primary school
- Potential expansion to 4FE
- Community integration
- Civic presence
- 52FTE Standalone nursery
- Positive collocation
- Café/Recreation
- Distinctive
- Environmentally conscious













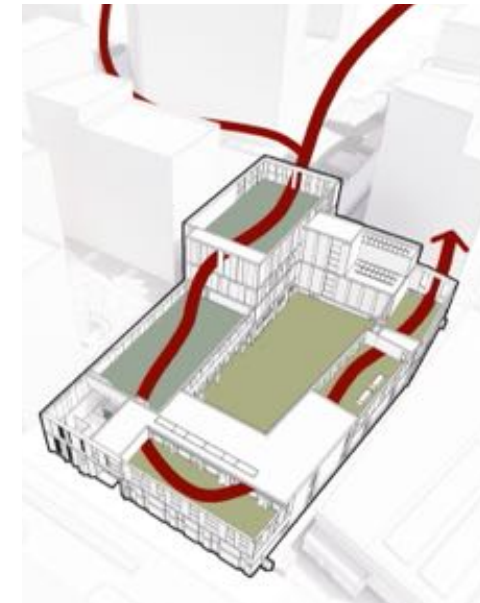
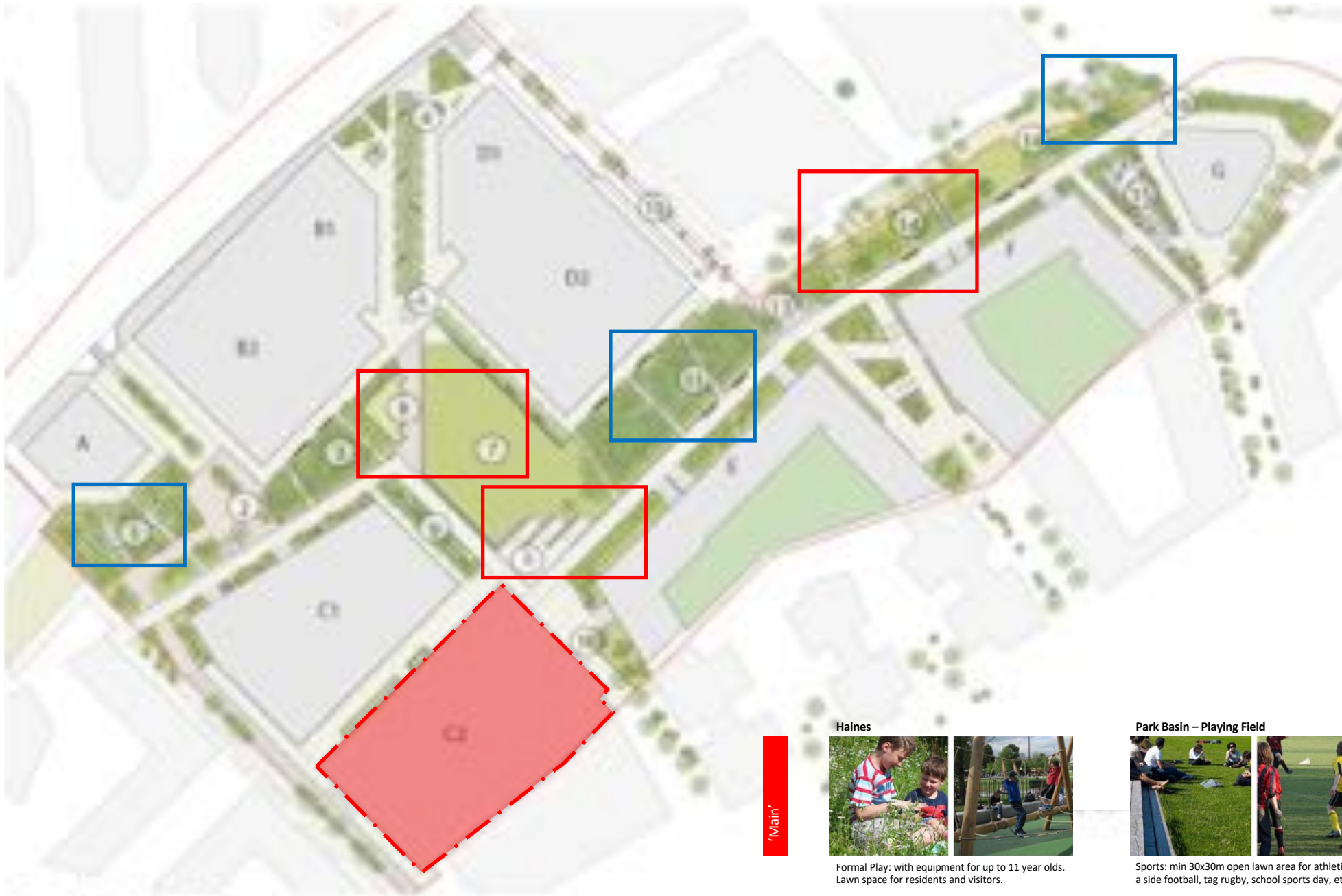












'Secondary'

**Nine Elms Rain Gardens**



Biodiversity & Learning: changing colours and textures throughout the year...one of the more dense areas of planting creating an intimate space...raised walkways preserving the biodiversity below.

'Main'

**Haines**



Formal Play: with equipment for up to 11 year olds. Lawn space for residents and visitors.

**Park Basin – Playing Field**

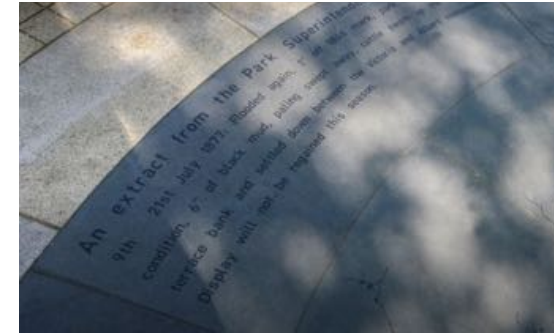
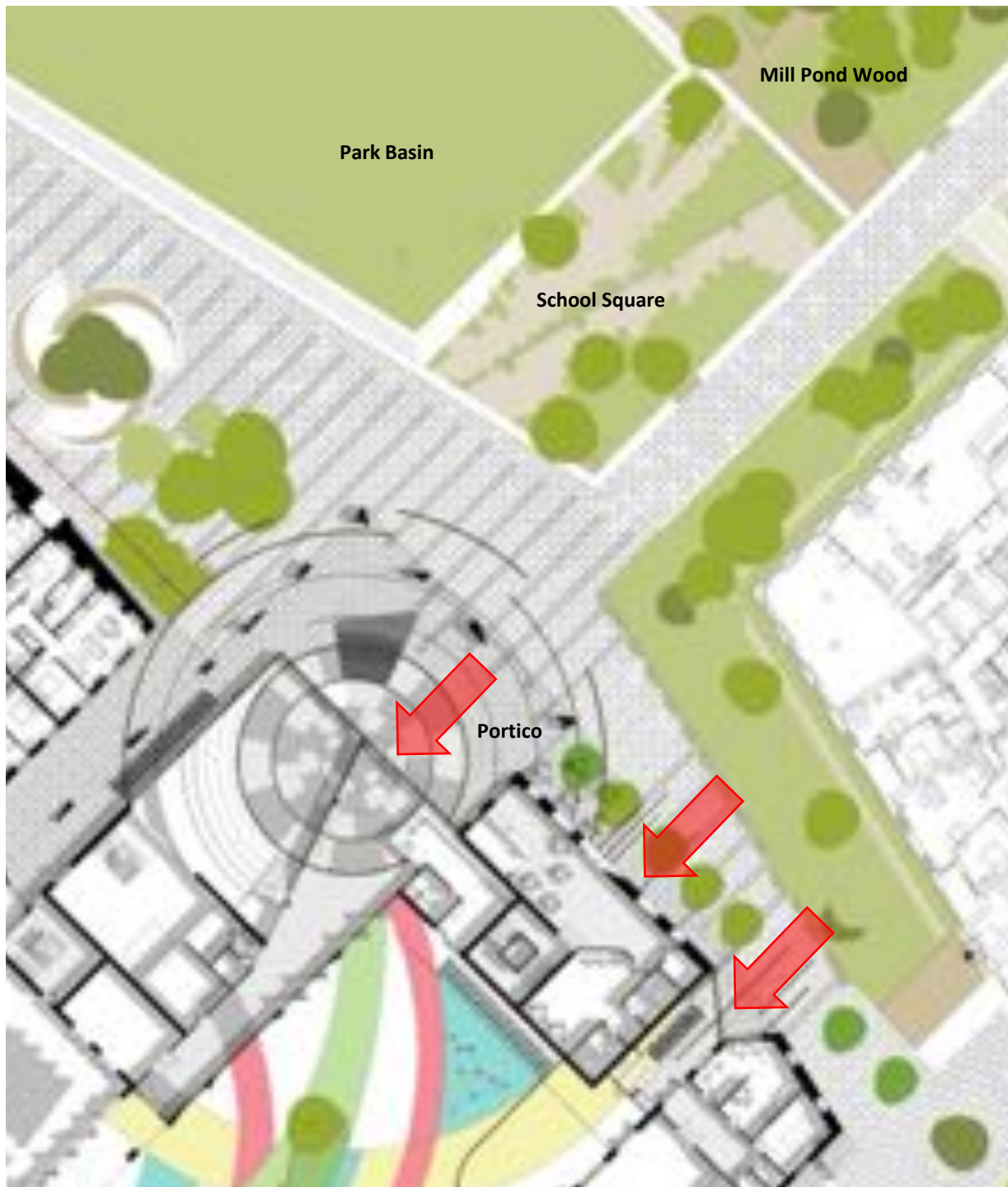


Sports: min 30x30m open lawn area for athletics, five a side football, tag rugby, school sports day, etc.

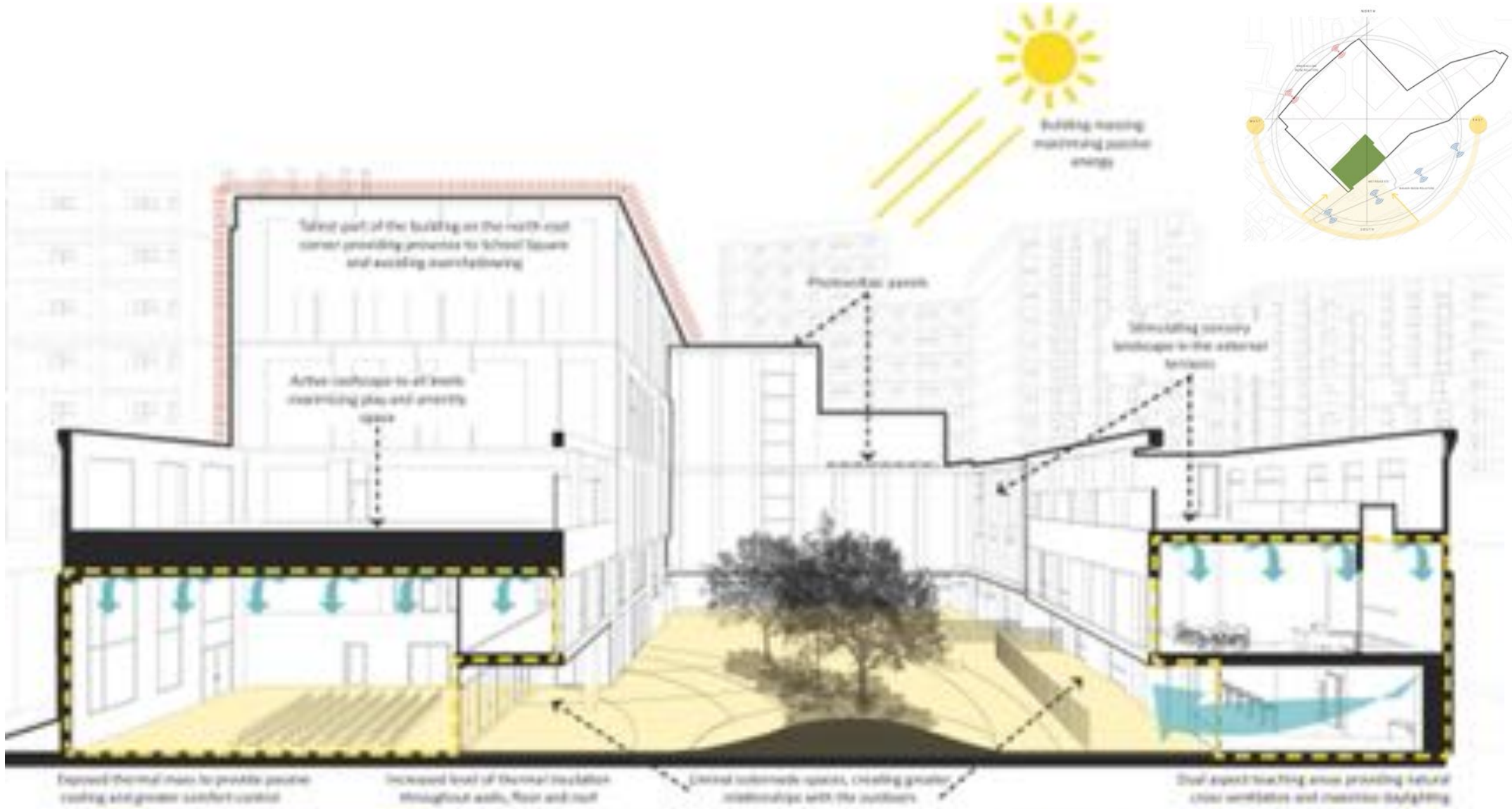
**School Square**

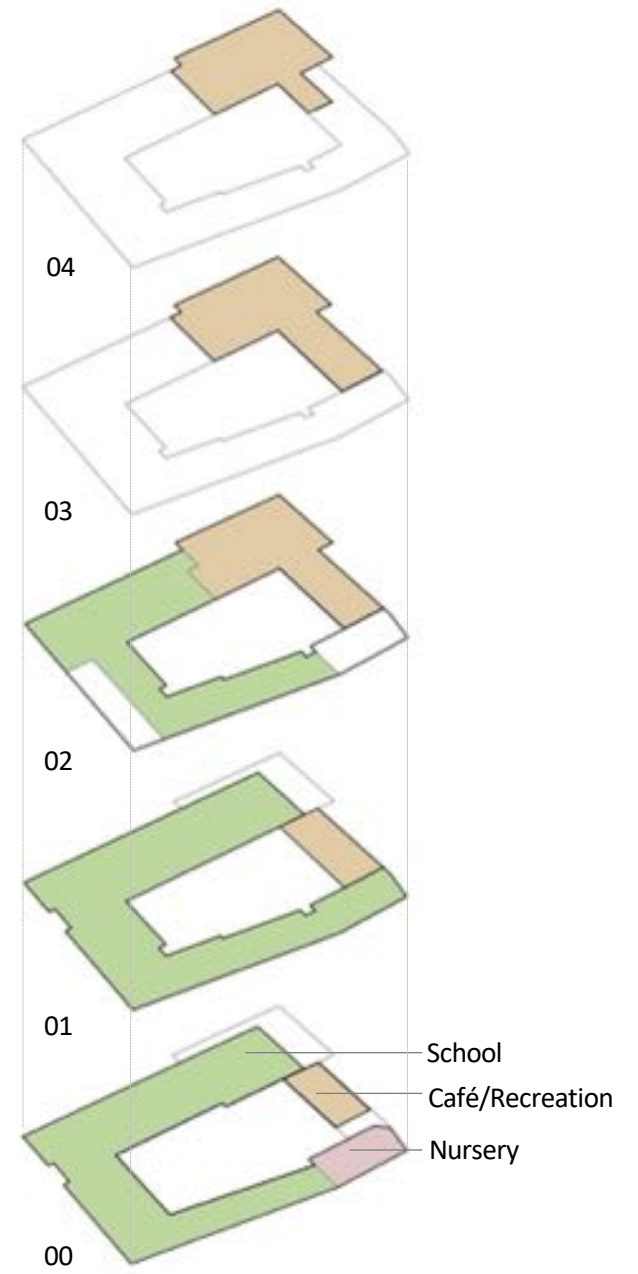


Formal Play: Parkside Play provides formal play area for up to 11 year olds.

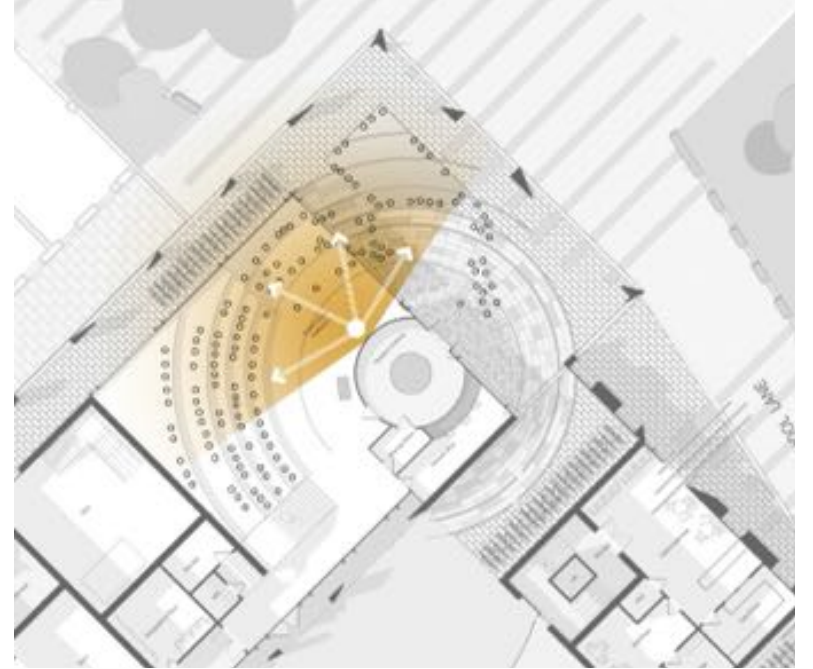
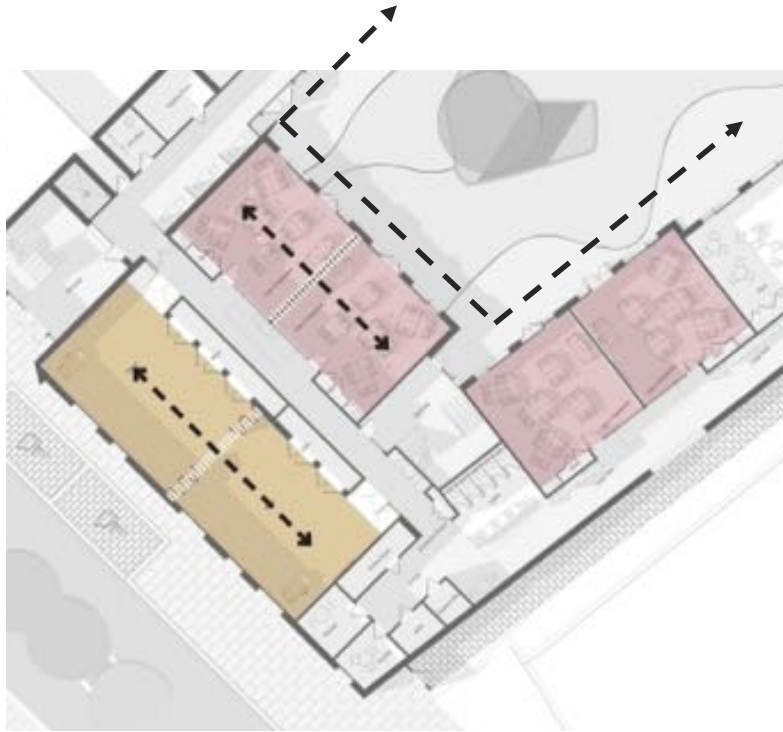
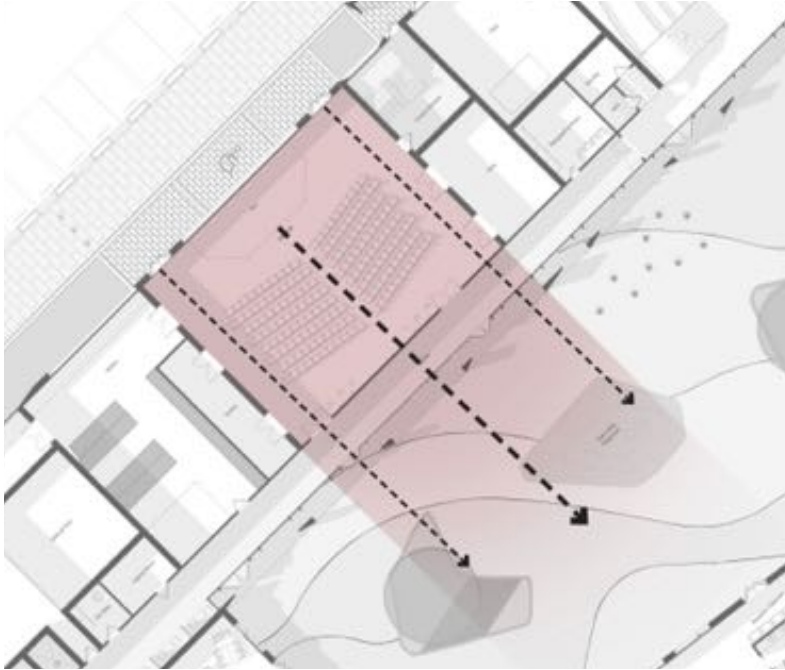














WELCOME TO ECMS  
End Of Year  
Talent Show











### Second Floor MUGA (School)



Active play for all years. External MUGA space to help deliver sports curriculum. Porous macadam for netball, tennis, football and basketball. School use only.

### Third Floor MUGA (Recreational/Café)



External MUGA for sports including hockey and football, distinct from school. Two MUGAs with different surfaces provides the greatest flexibility for both users and under prior arrangement the school can utilise the community facility.

### Second Floor Play Terraces



### First Floor Curriculum Terrace



Managed learning space collocated with science/arts room

- Wildlife
- Allotment/growing
- Outside classroom – science/maths in the landscape

### External Terraces for KS1/KS2

- Play/activity space for break time
- External teaching resource collocated with classrooms
- Seating areas with some soft landscape/canopy
- Zoned spaces providing choice

