

DON'T MOVE IMPROVE!

nla

2022 EDITION

At the forefront of character

FEATURING

2022 winning projects, shortlist and more

START YOUR PROJECT TODAY

Advice from the experts



Partners



Supporters



Media Partners



NLA is an independent membership organisation for everyone with an interest in London's built environment, with a clear purpose to improve the quality of people's lives by making London a better place to live, work and visit.

We engage the broadest possible audience across government, business and the public to educate, challenge, connect and drive positive change.

NLA's activities include research, events, publications, exhibitions, walking tours, learning programmes, websites and social media platforms, awards and competitions, the world's largest architecture festival and public galleries that feature large interactive scale models of London.

nla.london
@nlalondon

© 2022 New London Architecture

DON'T MOVE IMPROVE!

2022 Edition

dontmoveimprove.london

Editorial: Florence Maschietto, David Taylor
Awards team: Florence Maschietto, Amy Chadwick-Till, Ellie Davies
Advertising: Rowan Mason
Design: Stefano Meroni
Cover image: Little Brownings by Archmongers
Photography by French + Tye

Printed by Park Communications on FSC® certified paper. This is a carbon neutral print product.



Character at the forefront 2
About Don't Move, Improve! 3

HOME OF THE YEAR 2022
Austin Vernon reimagined 4

ADVICE AND TIPS
The joy of coming home: transforming your home with bespoke glazing 12

MATERIALS AND FINISHES
Monumental materials 14
Minimalist bathrooms: benefits and challenges 20
Tactile craftsmanship 22

COMPACT HOMES
Ambitious thinking 24
Prioritizing low energy appliances in small spaces 30
Compact stories 33

UNIQUE HOMES
A testbed for ideas 34
Unique and unruly 40

URBAN OASES
Ancient oaks 42
Seamless connections 48

TRANSFORMATIONS
Noble narratives 50
How are the new ventilation regulations going to affect your home? 56
A story to tell 59
Small spaces, big ideas 60

Winner profile **Shortlisted and longlisted projects** **Editorial**

Character at the forefront

This year’s programme commends the best home renovations, extensions and expansions that put character, narratives, seamless connections, and bold material choices at the forefront.

Our shortlisted projects reflect London’s rich and variant residential landscape whilst focusing on liveability, cost-effectiveness, and intuitive consideration of local contexts.

Don’t Move, Improve! celebrates great domestic-scale design that pushes the boundaries of creativity, showcasing how homeowners and architects have rethought design, space and inhabitability, adding longevity and efficiency to homes across the capital.

Throughout the programme we explore projects that show us innovatively designed indoor-outdoor living, clever solutions to compact spaces, raw use of natural materials, and bold colour palettes.

Responding to our growing ambition, we launched our brand new website **dontmoveimprove.london** in February 2022, that will allow us to keep developing our brand and our vision, promote our annual programme and stay connected with our audience.

With design surgeries, social events and our *Don’t Move, Improve!* annual publication, we look forward to growing our programme and reaching out to homeowners and professionals across London to keep discovering inspiring home renovations.

Florence Maschietto
Programme Manager, NLA



Little Brownings by Archmongers. Photography by French+Tye

DON'T MOVE, IMPROVE!

Don't Move, Improve! is an annual programme and competition that encourages great design in everyday life and celebrates the newest and most innovative home improvements projects from across London.

This magazine includes this year's six winning projects, 15 shortlisted projects as well as a curated selection of longlisted projects that celebrate this year's themes, with exclusive insights from industry experts on emerging trends and styles.

THE COMPETITION

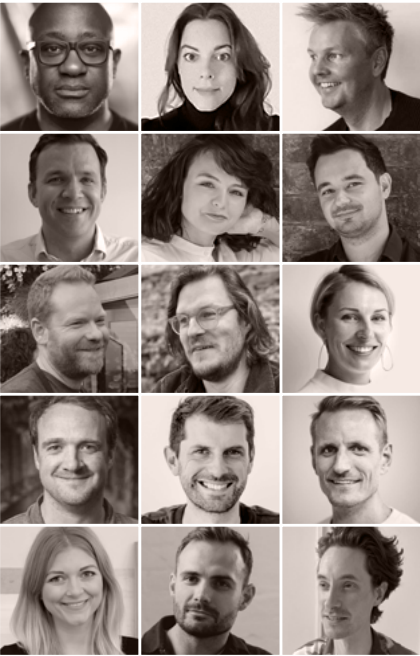
The annual competition is open to practices and homeowners who have carried out extensions on top of, underneath and on the side or back of buildings, and/or interior insertions, conversions, and garden studios in Greater London in the past two years. This issue covers the period between September 2019–September 2021. Projects featured in the awards demonstrate:

- Exceptional innovation, creativity and originality
- High quality design that improves liveability of space and quality of life
- Cost-effectiveness
- Environmental consideration for the materials, efficiency and longevity of the building
- Contextual design that adds to London's character and the life of the surrounding neighbourhood

PRIZES

As well as the Overall Winner, this year we have awarded five prizes that celebrate emerging trends and key challenges within home improvements projects. These are:

- **Materiality and Craftsmanship Prize**
- **Compact Design Prize**
- **Unique Character Prize**
- **Urban Oasis Prize**
- **Transformations Prize**



JURY

Our jury includes experts from across the industry. This year's jury includes:

Kunle Barker, COO, Melt Property
Anna White, Property, business and lifestyle journalist for the Telegraph Media Group, The Guardian and the Evening Standard's Homes & Property
Phil Coffey, Director, Coffey Architects
Sebastian Wood, Founder and Managing Director, Whitby Wood

PEER REVIEW PANEL

Our Peer Review Panel, made up of the winning architects from *Don't Move, Improve!* 2021, selected the top 82 projects to be featured in this year's programme. The Panel includes:

Anamaria Pircu, Founding Partner, VATRAA
Bogdan Rusu, Founding Partner, VATRAA
Nick Hayhurst, Director, Hayhurst & Co Architects
Jonathan Nicholls, Director, Hayhurst & Co Architects
Elizabeth Fraher, Design Director, Fraher and Findlay Architecture
Paul Turner, Architect/Director, Turner Architects
George Bradley, Director, Bradley Van Der Straeten
Ewald Van Der Straeten, Director, Bradley Van Der Straeten
Madeleine Ike, Director, Studio Hallett Ike
Jonty Hallett, Director, Studio Hallett Ike
Timothy Robinson, Founder, Sonn Studio

Austin Vernon reimagined

OVERALL WINNER 2022
Little Brownings by Archmongers
Dulwich Estate, Lewisham



If there is one project that is the embodiment of *Don't Move, Improve!* it is this one. Little Brownings is a three-storey, 1960s terraced house on the Dulwich Estate in Forest Hill, south London, where the architects subtly but stylishly updated the building's fabric, adding a 'jewellery box' of design features whilst retaining its mid-century characteristics. The architects' brief was to refurbish the house into a contemporary home, including a front extension to replace an existing lean-to. The resulting scheme works by using highly detailed solutions to create better-connected, modern spaces, while adding little to the home's footprint.



Photography: **French + Tye**

‘We were meticulous in controlling all the internal and external details, demonstrated by the simplicity and grace of the junctions of different materials with no compromise to their technical performance’
Johan Hybschmann, Archmongers



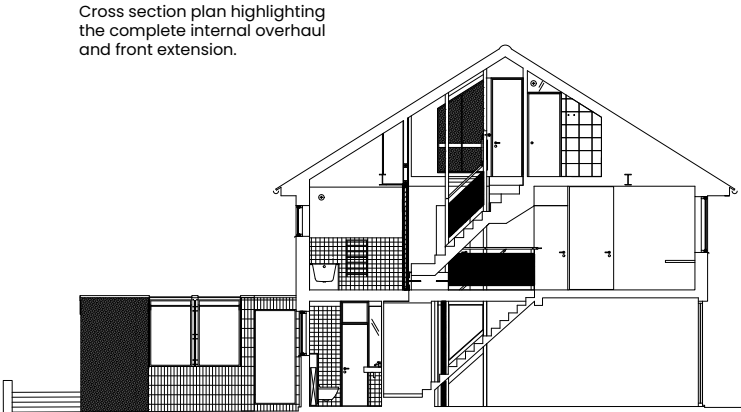
Characterful internal details include a bespoke handmade bannister (left) and a pink concrete ‘tongue’ kitchen counter (above).

JUDGES’ COMMENTS

‘This felt like the house we can all imagine ourselves in and the improvements we could all do, if only we had the right designers! – the embodiment of *Don’t Move, Improve!*’
Sebastian Wood, Founder and Managing Director, Whitby Wood

The skeleton or ‘bone structure’ of this mid-century house was good, say the architects. But the kitchen and hallway circulation needed to be redesigned to better integrate the main living spaces. The front extension was thus designed to work very hard to accommodate the kitchen and utility room in a restricted space. Yet it also showcases a ‘jewellery box’ of design features to extend the perception of space, allowing enjoyment of the surrounding terrace and trees. Features include a glazed inlet full of plants, large skylights and windows into the kitchen, mirroring the original glazed rear wall, and a staircase with exposed wooden structure.

The house has been respectfully updated for modern living without losing any of its very pure 60’s character. It is an example of how progressive and community-based these houses were, since with some





help, it is now an uncompromising modern house for years to come.

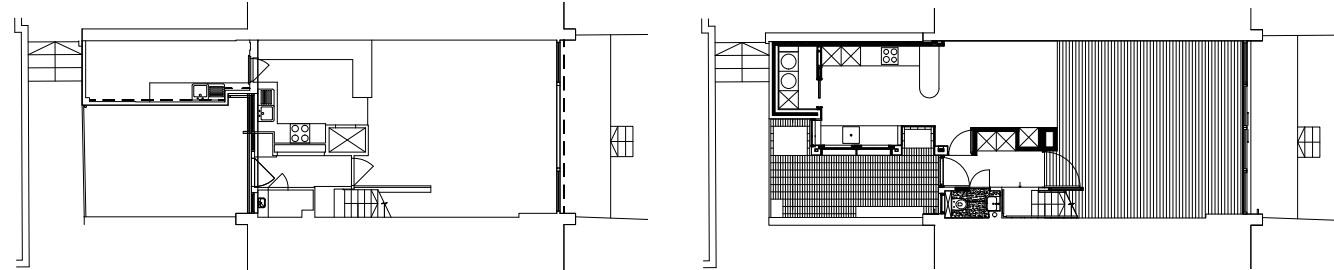
Johan Hybschmann of the practice believes the durability of the concept and materials used demonstrate the architects' approach to sustainability and placemaking, with the design instilling a 'freshness' to the estate in which it sits. He's also proud of the way the scheme overcame statutory challenges over maintaining the estate's uniformity, without compromising Austin Vernon & Partners' original estate vision.

'We set out to create a better experience in every space, from utilising angled mirrors to connect rooms to folding doors that enable versatile living', said Hybschmann. 'We're delighted with the end result'. ■

JUDGES' COMMENTS

'Since the scheme is a front extension instead of a rear one, that is interesting in itself, creating a threshold to the entrance of the house. There's a structural integrity to this. You can't tell where the line is between the old and new house. It's really clever, at a small scale. Hats off to the architects behind Little Brownings — the reworked 1960s house on the Dulwich Estate is both clever and cool. The bin store is now an elegant kitchen, which opens into a convivial dining and living space. Behind hidden doors and smart joinery is a wealth of surprise storage.'

Phil Coffey, Director, Coffey Architects



Before and after. The plan to the right highlights the transformation of the ground floor layout post-extension.



The joy of coming home: transforming your home with bespoke glazing

Jordan Vincent, Architectural Project Manager at Schueco, discusses the benefits of using glazing for wellbeing and energy efficiency in your home



Coming home should be one of the great pleasures in life. Leaving the stresses of the day behind and arriving at the place where we can truly relax. Or, if our homes are also where we work or spend

most of the day, having a space that is a joy to spend time in can make all the difference.

We spend an inordinate amount of time at home compared to pre-2020. We now realise just how important this space is – for our safety, health and overall happiness. It's become apparent that it should be a priority for us to fill our homes with light and warmth, and to ensure they aren't restrictive as they are used for work, relaxation and entertainment.

How can choosing the ideal glazing help us achieve this? Especially in a period property that is likely to be a bit darker and more enclosed. Often period properties are extended to the back (the front is much too beautiful) to make room for growing families, or just to enjoy inclusive, open spaces. Even small extensions provide the perfect place for dining, reading nooks, home offices or exercise areas. A glazed link between the existing building and an extension, or the creation of a light well, can offer a swathe of new, natural light that otherwise wouldn't be enjoyed.

A great example of this is the renovation of a semi-detached Victorian home in south London which uses wrap-around glazing to join the original building with its new extension. Part of the brief was to ensure as much light was let into the property as possible. The homeowner said: 'I realise now the power that a well-designed room has on one's spirits. I practically live in the kitchen. I can come down in the morning, even in the deep recesses of winter, and come into a place bathed in light and warmth – it lifts the spirits instantly.'

Ample light helps to reduce stress and anxiety and increases vitamin D production, promoting better health. Moreover, skylights or large south-facing windows can actually be a great way to save on heating costs by providing natural heat from the sun.

An important consideration here is the U-value and insulation of your window systems. A standard Victorian house often uses over 200 kWh/m² of energy to keep it comfortably heated, while new-build homes built to passive house standards will not exceed 15 kWh/m². Schueco window and door systems designed to passive house standard can significantly help towards keeping an older home warmer, while allowing as much light in as possible.

Finally, large bifold or sliding doors that open up into the garden also can create much more expansive sightlines and underpin the connection from the garden or outdoor area through the house. Schueco AWS barrier-free doors with a level threshold provide an opportunity for inclusive design, bringing the best possible extension to living spaces, with no trip hazards. ■