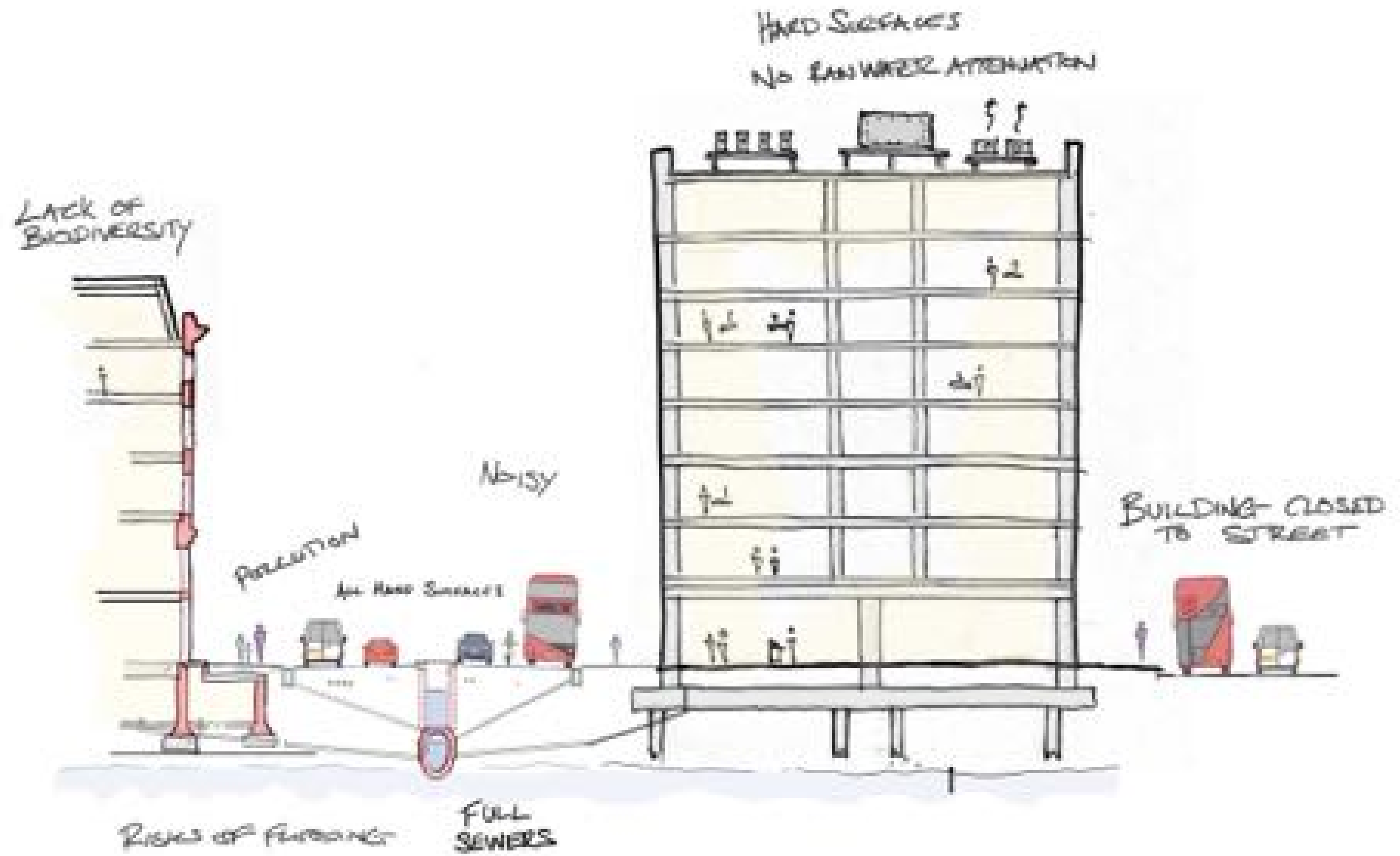


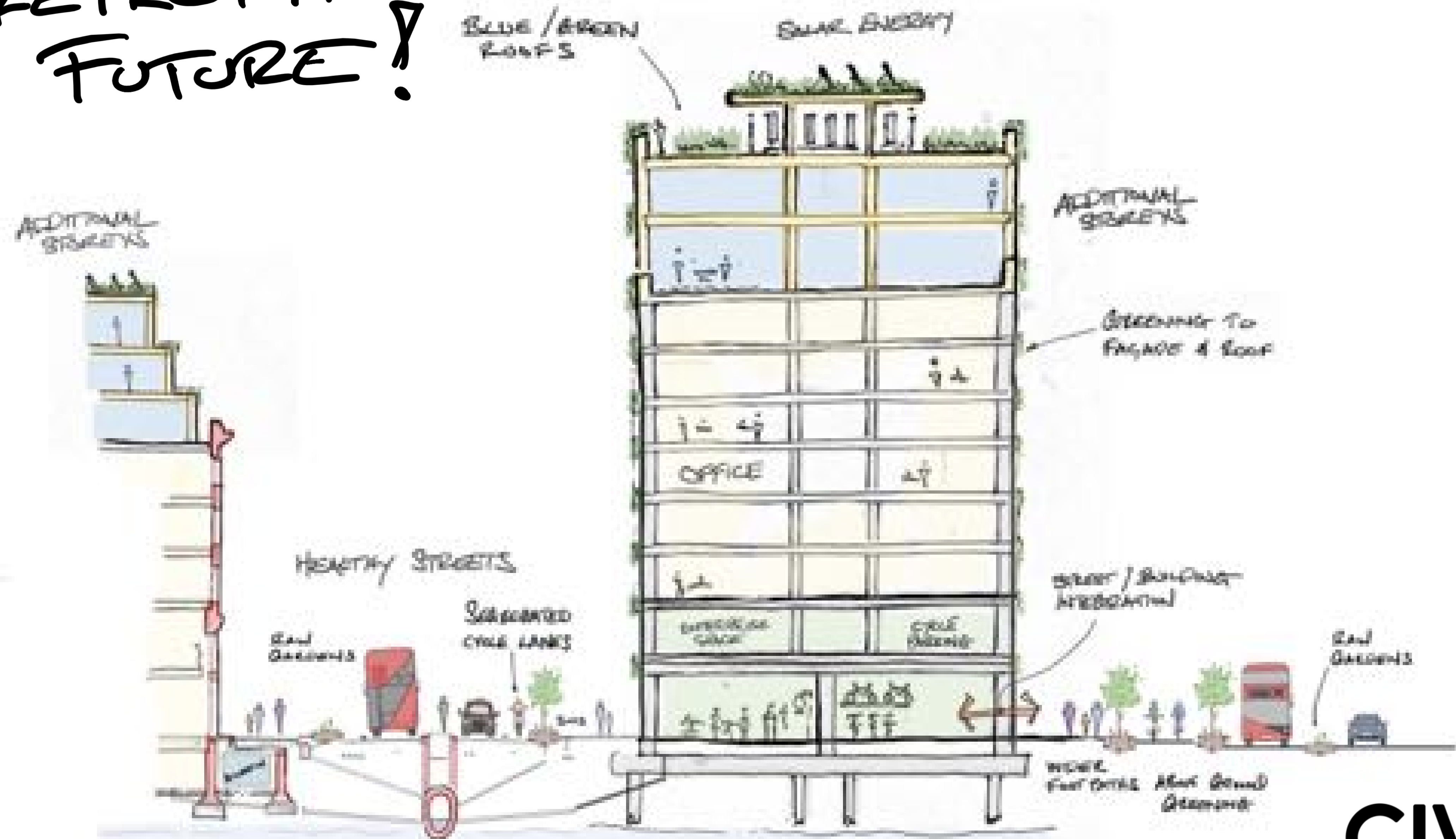


CIVIC

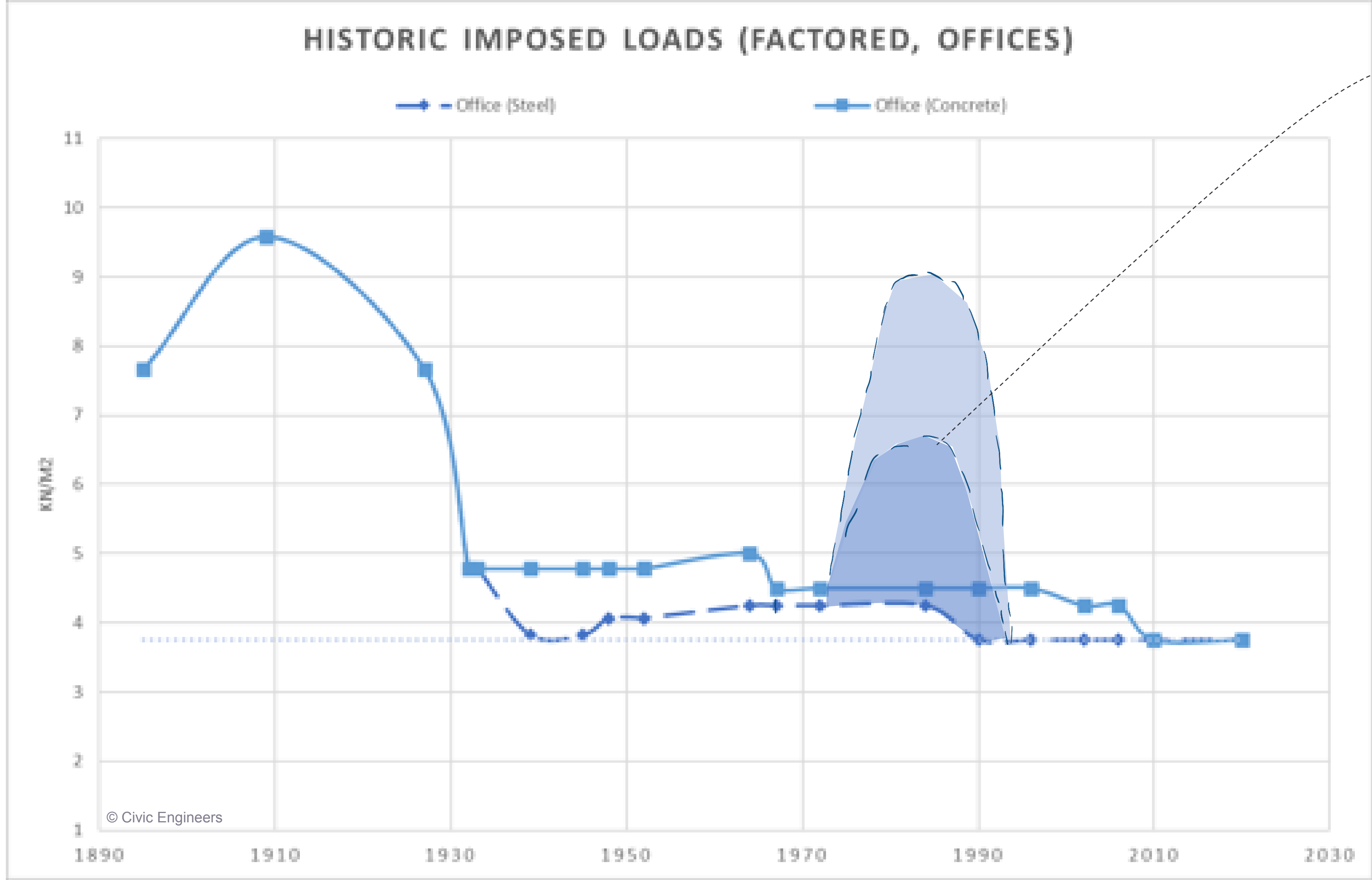
OUR URBAN CREATION...



... A RETROFIT
FUTURE?



When shoulder pads were fashionable...



During the 1980s there was a tendency for offices to be designed for 3.5 to 5kN/m²...
...compared to current values of 2.5kN/m²



... over design of office buildings during the 1980s



Park Hill - Phase 1





20th Century Triangle



The Carbon Quadrant

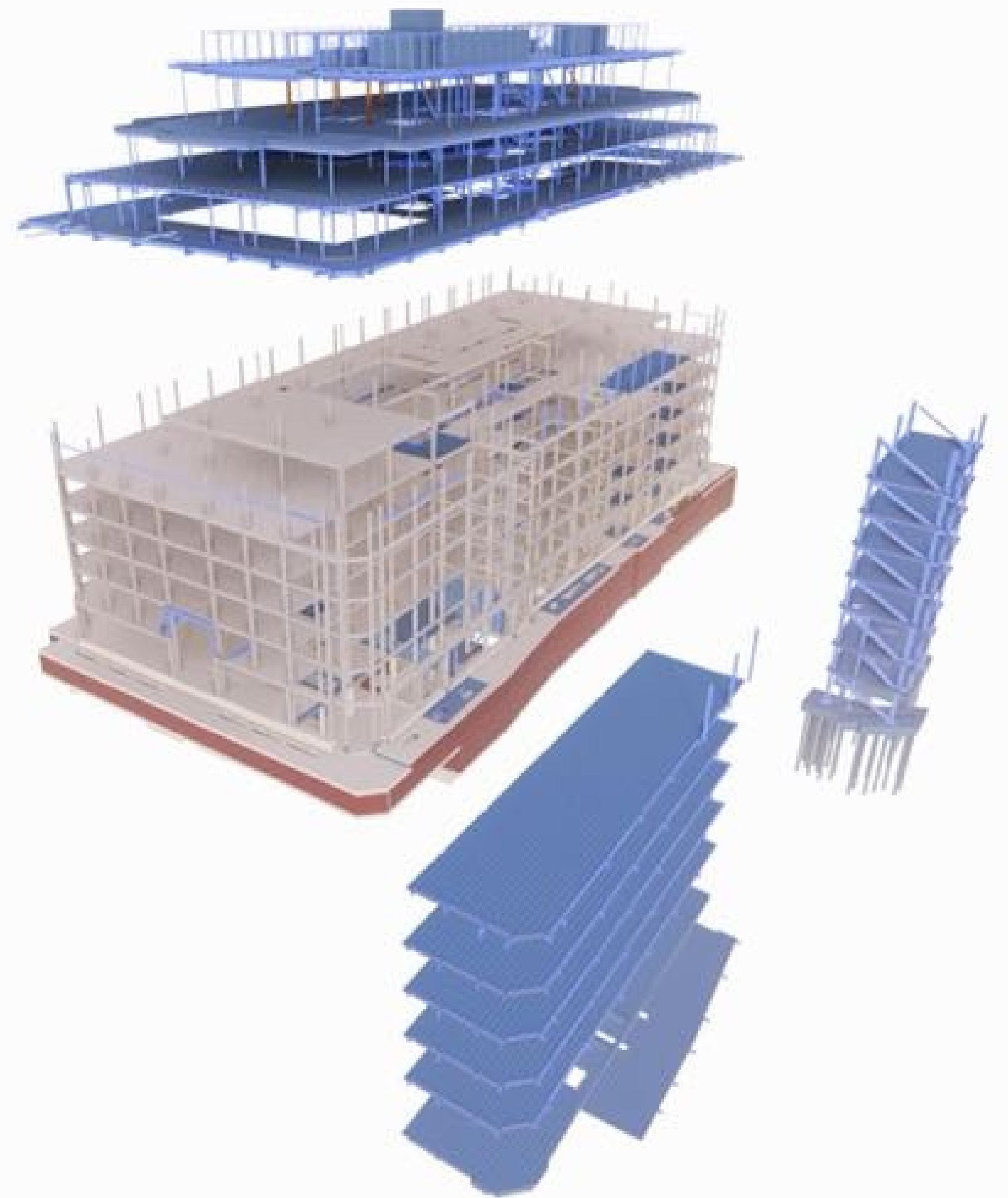
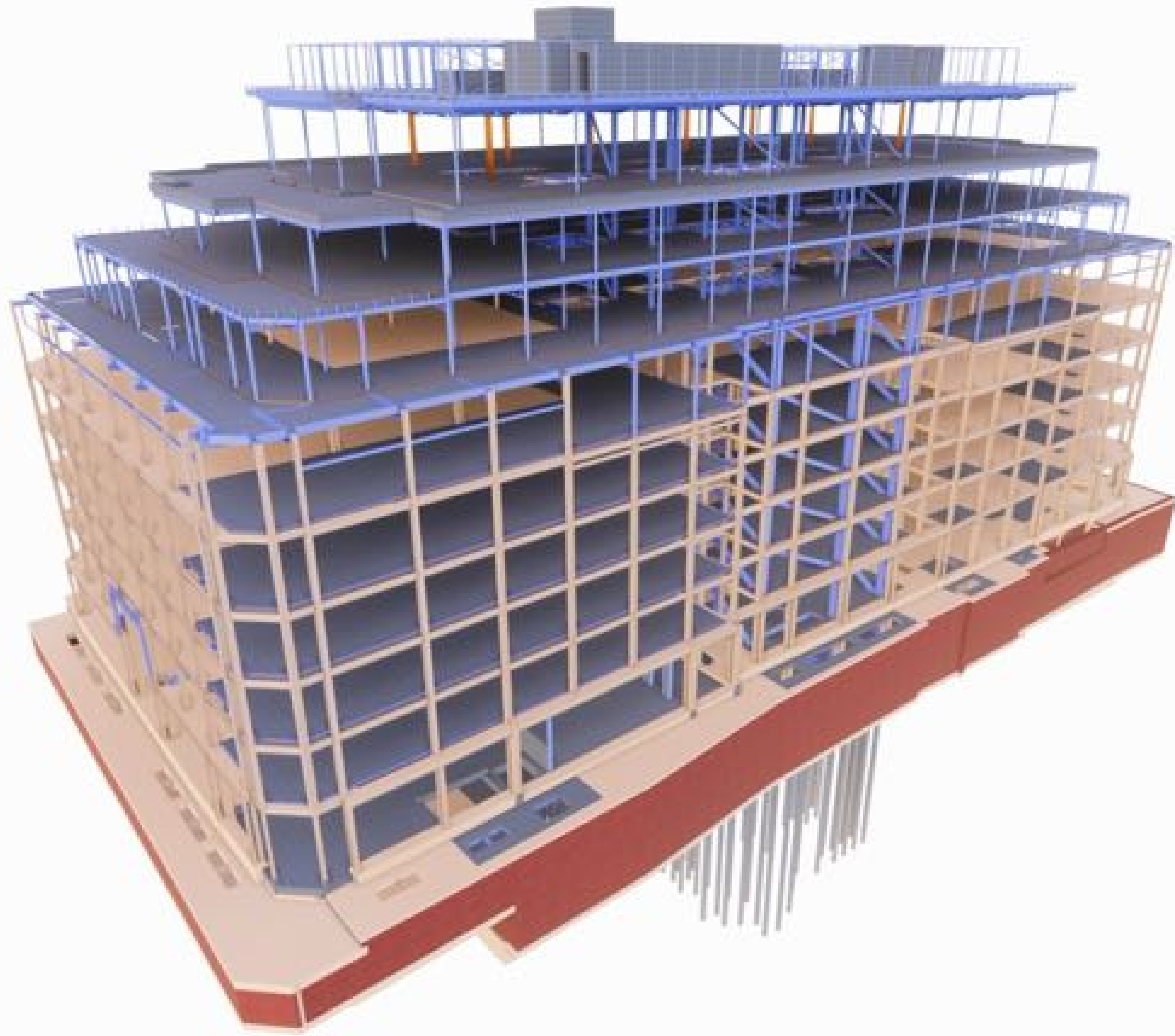




Park Hill - Phase 2











Circular Steel Re-Use: The Elephant to TBC.London



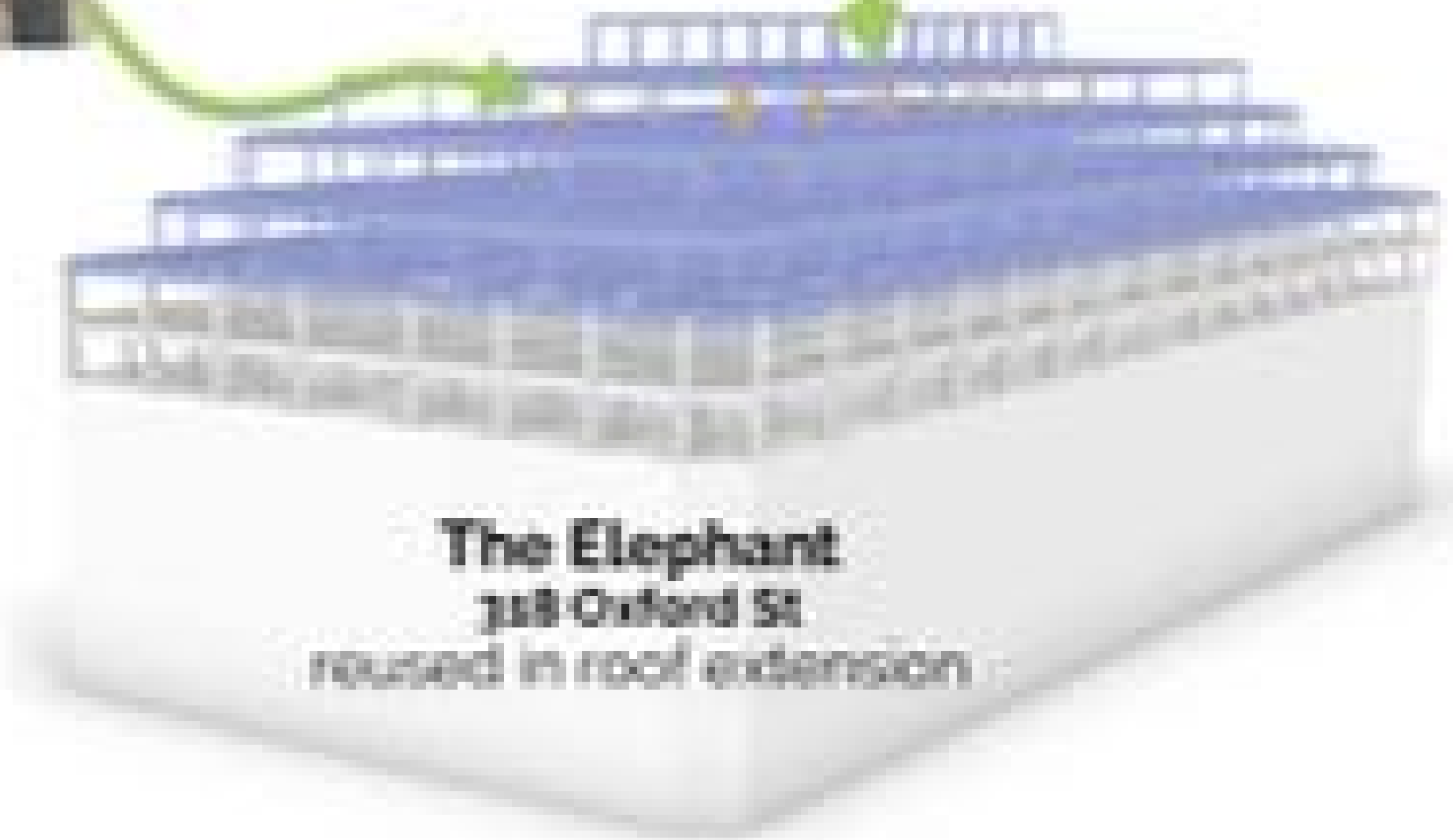
perimeter columns
reused on site
2.5 tonnes
(equiv. 6 T CO₂e)



The Elephant
118 Oxford St
donor building



floor beams reused
on separate site
40 tonnes
(equiv. 100 T CO₂e)



The Elephant
118 Oxford St
reused in roof extension



TBC.London
recipient
building



Mayfield, Manchester











CIVIC